



Karl Slezak Eventing

Winter Updates

The Newsletter....Finally!

Winter Issue
Issue 1, Volume 1

Thank you to my
sponsors for the
high quality
products you
provide to both
me and my
horses



EQUESTRIAN
FACTORY
OUTLET

E

GAME READY



Davis Feed and Farm
Supply Ltd.

While I do try my best to be in contact with each and every sponsor and supporter as much as possible it can be challenging to reach everyone with every update as I would like. To keep you in the loop and aware of the successes, challenges, new arrivals, future plans and schedules of the entire Karl Slezak Eventing Team I have decided to create a newsletter. This news update will be sent out every other month. In this issue we have updates from the first few events, a schedule for the rest of the season, some introductions as well as the details of a release date for the new and improved karlslezakeventing.com. I hope you are all enjoying the beginnings of spring. Things are finally starting to warm up here in Ocala just in time for the big events of the season. I welcome you to join me at any of these competitions and point specific focus to Rolex from April 21-25th in Lexington, Kentucky. Hope to see you there!!

An Exciting Start to the 2010 Eventing Season

I arrived in Florida at the end of January after a non-eventful trip from Ontario in about 25 hours. I was lucky enough to have the company of my Dad for the trip down. The first week in Florida was busy! All of the horses traveled well to Florida and settled in nicely at the farm. Canadian Team Training Camp with David O'Connor began on the 3rd of February and consisted of Dressage, Show Jumping and Cross Country lessons. Charley was up for the challenge of these lessons and David provided me with lots of insight on the challenges we will be faced with on course this year. Technically difficult show jumping and cross country courses will dominate the events this year and preciseness and adjustability is what will separate the field. Charley and I had a great start to the competition season this year at Rocking Horse in the Open Intermediate division. With a strong dressage test and clear cross country ride we finished 3rd in a very talented field of horses and riders and this weekend will travel to Poplar Place to run our first Advanced horse trial of the season. I am lucky to have the support of Charley's owner Dr. Penny Rowland at each of these competitions as well as help of my new working student Janelle Caldwell. This is an exciting season for me and I sincerely thank each and every one of you for your help along the way to the World Equestrian Games and Beyond.



Charley and I jumping a WIDE oxer during Training Camp.



Some Dressage Advice from David

Introducing Working Student *Janelle Caldwell*



Janelle Caldwell joins the Karl Slezak Eventing team as a working student for the 2010 season. Janelle has been trained at Foxcroft Farm under the guidance of Stephanie St Pierre and brings with her, "Dinera", who is her long-time ride and preliminary partner. Dinera and Janelle have had a strong start to the season with an 8th place finish at the Florida Horse Park in the training division and a 7th place finish in the Young Rider Preliminary division at Rocking Horse. Janelle also takes over the ride on Janette Leask's "Rather Well" who was an advanced level partner of mine. Janelle and "Rather Well" finished second at Rocking Horse Spring Horse Trials on March 13-14th in the training division. We're looking forward to seeing great things from this new partnership. Janelle will be at each event with working as well as competing her own horses. Welcome Janelle!

Great Success with "As Time Goes By"

This season I have also been working with Dana Carlin's mare, "As Time Goes By" who is known around the barn as Cala. Dana has visited in Florida and was happy with the progress we'd made. In her first few outings of the season Cala has had some impressive results. She finished 7th at Rocking Horse Winter II in the preliminary division and then finished 3rd at Rocking Horse Spring Horse Trials in the intermediate division. This weekend I'll be taking Cala to Poplar Place in the open intermediate division.



ROLEX KENTUCKY THREE-DAY EVENT

Several activities have been planned for Team Slezak Supporters during this event from April 22-25th, 2010

Wednesday April 21st - Team Dinner

Thursday April 22nd - Cross Country Course Walk with Karl

Saturday April 24th - Team Canada Party



Please contact Emily at supportkse@gmail.com for more information or to confirm your attendance.

* * locations and specific times to be determined closer to the event * *

COMPETITION SCHEDULE

EVENT	LOCATION	DATE
Poplar Place Horse Trials	Hamilton, Georgia	March 19-21, 2010
The Fork CIC * * *	Norwood, North Carolina	April 1-4, 2010
Chattahoochee Hills Horse Trials	Fairburn, Georgia	April 10-11, 2010
Florida International CCI * * /CCI * 3-Day	Ocala, Florida	April 15-18, 2010
Rolex Kentucky CCI * * * *	Lexington, Kentucky	April 22-25, 2010

Updates from Home: Wolf Run Farm

While I am lucky enough to be competing under the Florida sun, there are lots of exciting updates back in Ontario at Wolf Run Farm where I train, teach and ride for the remainder of the year. Several of my students have been working with dressage rider Rebecca Schoenhardt. It is fantastic for Rebecca to help out for the winter and I'm excited to catch up with all of these students when I return to Ontario. We also have several new boarders at Wolf Run including Ann and Fred Nagy who join the Slezak Team with their three horses: Lance, Gryph and Angus. Paula Bradley has also moved into Wolf Run with her preliminary partner William. I look forward to working with them in the spring. In the meantime I would specifically like to thank Pat Fitzgerald who owns and runs Wolf Run during these winter months. Without her support I would be unable to train in Florida each winter.



Thank you to all my sponsors and donors. Your support is invaluable and truly helps me accomplish my goals!!



www.alltechfeigames.com



www.london2012.com

Contact Karl

Phone

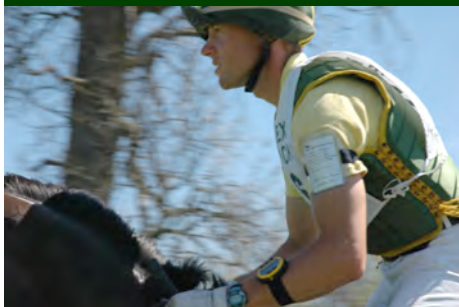
647-229-0092

E-mail

supportkse@gmail.com

Website

www.karlslezakeventing.com



No hour of life
is wasted that
is spent in the
saddle.

Winston Churchill



Donations Still Needed

The costs associated with campaigning horses at this elite level of competition make it impossible for Karl to reach his goals without the support of generous sponsors. All donated funds will go to the maintenance, training and show fees for Karl's elite horses.

If you are interested in supporting Karl, please contact his sponsorship team at supportkse@gmail.com

Developing and maintaining reciprocal relationships with all sponsors is a part of the Team Slezak approach. Sponsorship rewards are outlined below for each and every possible donation. We thank you in advance for your generous support.

Advanced Sponsor	\$25,000+
Intermediate Sponsor	\$15,000
Preliminary Sponsor	\$10,000
Training Sponsor	\$5,000
Pre-Training Sponsor	\$2,500
Entry Sponsor	\$1,000
Friends of Karl Slezak	less than \$1,000

LOCAL ATHLETE KARL SLEZAK SETS HIS SIGHTS ON THE WORLD EQUESTRIAN GAMES

Support his quest to represent Canada this fall by contacting Team Slezak

supportkse@gmail.com

all donations are 100% tax deductible



Until Next Time.....

Karl Slezak